

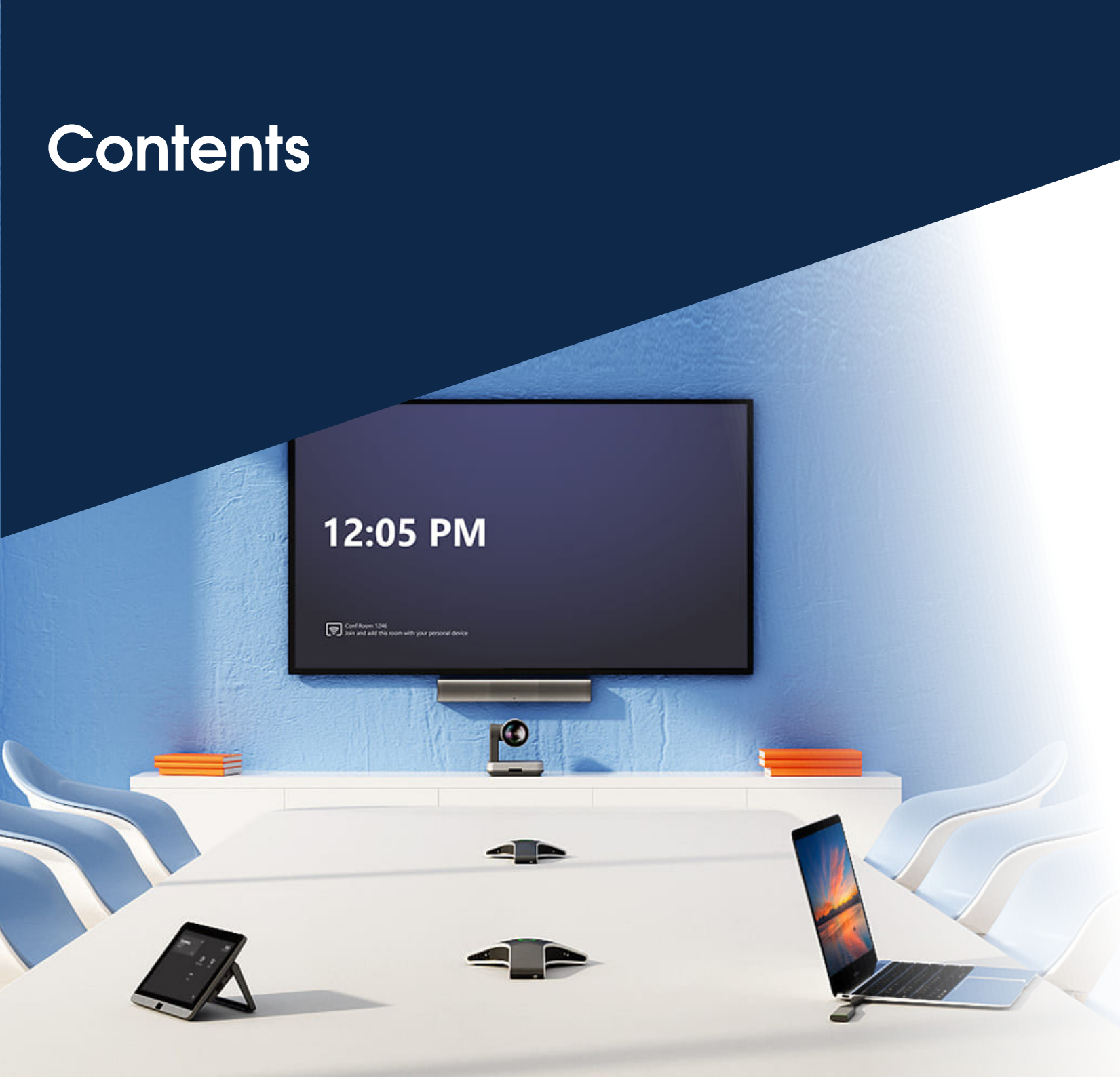
Immersive meeting solutions for everyone, everywhere



TeamsLink 



Contents



Hybrid is here to stay _____	3
Why should you invest in your meeting room solutions? _____	4
Creating the perfect set up _____	5
What is the function of the space? _____	6
How many people will use the space? _____	7
What are your audio and visual requirements? _____	8
What is the right microphone for the space? _____	9
What is the right speaker for the space? _____	10
What is the right camera for the space? _____	11
Equip every employee and every space _____	12
Home office _____	13
Private booth _____	15
Huddle space / small sized meeting room _____	17
Medium sized meeting room _____	19
Boardroom _____	21
Open space _____	23
Reception _____	25
MS Teams rooms on Surface Hub _____	28
Solutions for workers on the move _____	29
Today's businesses will adopt tomorrow's technology _____	30
Contact us _____	31

Hybrid is here to stay

Hybrid working is the future of the workplace. This change in the digital landscape means we are rethinking our attitude to where we work and our office spaces.



Businesses and employees alike are benefiting from the flexibility, agility and resilience a hybrid workforce provides. Improved staff retention and reduced operating costs are just some of the associated benefits.

Offices now see an ebb and flow of activity as people opt for Hybrid working. The office is still a hub for collaboration and creativity, but now organisations are taking steps to ensure users are able to fully participate in meetings and collaborate remotely .

Technology is available to help bridge the divide and empower your employees to do more than ever before.

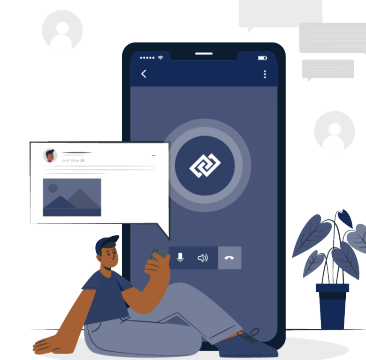
Why should you invest in your meeting room solutions?



Hybrid working means organisations need to embrace flexibility and make all meetings seamless, empowering people to collaborate from anywhere. Bridging the gaps between in-person and remote attendees ensures everyone can be seen, heard, and fully engaged, whether they are meeting in private, small, medium, large or open spaces.



Collaborate
Enhance meeting collaboration and co-creation.



Connect
Reduce friction for in-room participants.



Control
Foster interactive and inclusive meetings for all.

Creating the perfect setup

In order to create the perfect Meeting Room setup for optimal experience, there are some key considerations.



- What is the function of the space?
- How many people will use the space?
- What are your audio and video requirements?
- What is the right microphone for the space?
- What is the right speaker for the space?
- What is the right camera for the space?

What is the function of the space?



The type of space you're looking for - whether it's a quiet space to focus, a space for team collaboration, or somewhere to host board meetings - will all have an impact on your room setup. This is why it's important to consider the function of your space before you begin your planning.

Are you using the space for more than just meetings? Common areas and community spaces foster connections. Creative work requires space for collaboration and a layout of technology that helps facilitate this. A well thought out space provides frictionless use of the equipment available, enhancing user experience.

Another key consideration is whether the space is for in-person or remote collaboration. The right space provides an immersive, all-encompassing experience for all users.

How many people will use the space?



This may seem like an obvious consideration, but deciding how many people will be using the space regularly is important. Audio needs to be thought about differently if a group is large and the placement of video devices will also be a key consideration.

Making sure everyone can use the room comfortably with the necessary equipment will enhance user experience.

What are your audio and visual requirements?



The right audio and video technology elevates your meeting room, empowering users to get the most out of their Microsoft Teams meetings every time.

Audio considerations are critical to ensure that both in-room and remote participants can hear and be heard clearly. Positioning of microphones and speakers must include every seat in the meeting room for optimum user experience.

Video is as equally important as audio. The ability to see non-verbal communication as you would in real life maximises engagement and understanding.

Rooms need to be equipped with a suitable sized display so that all participants can experience the meeting properly. The right camera coverage and Field of View (FOV) setup will capture all participants for those joining remotely, and ensures facial expressions and gestures aren't missed.

What is the right microphone for the space?



Microphone coverage that captures crisp, clear audio from every corner of the room.

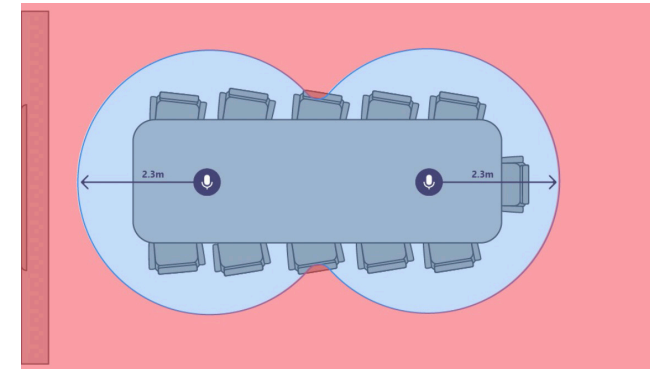
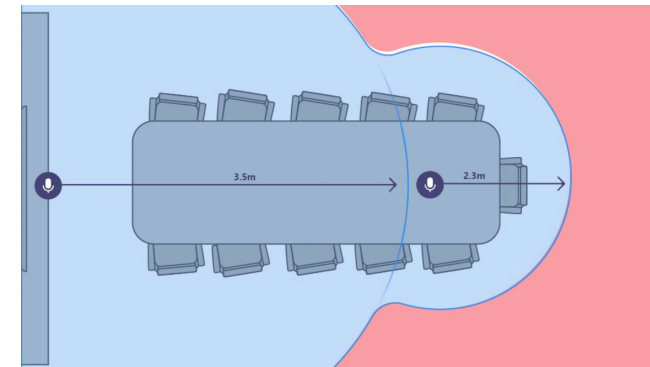


Table-top and ceiling microphones provide maximum coverage for vocal recognition, especially if conversations happening locally need to be shared remotely. However, they both require a more involved installation and table-top microphones may be more obtrusive to users sitting at the table.



Providing the voice at the front of the room where remote participants are viewed, gives the audio illusion that the speaker is placed there in the room. Installations are generally less involved, but in-room participants that are further away may not be heard as clearly.

What is the right speaker for the space?

Speaker coverage needs to project voice and presentation sound to all the participants in a space.

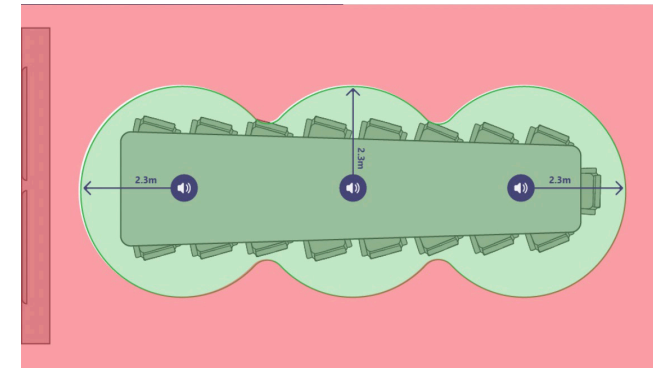
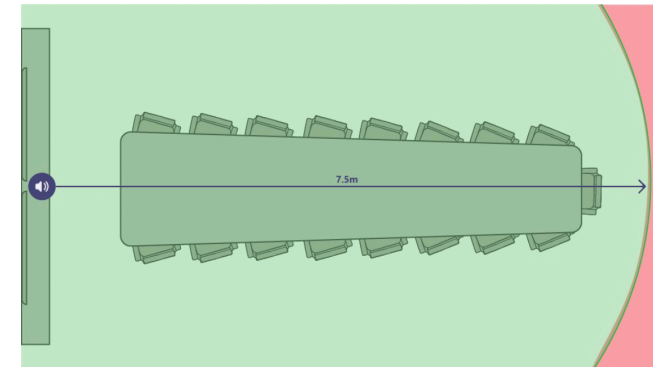
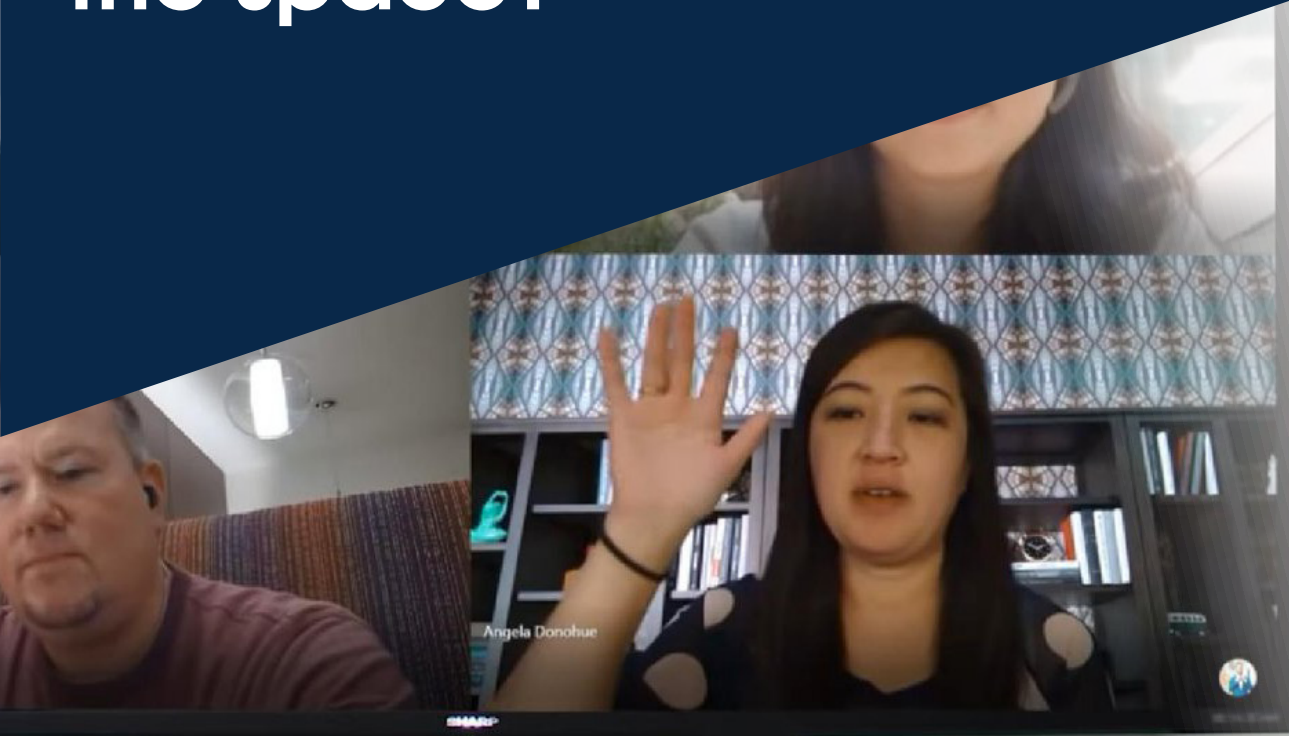


Table-top and ceiling speakers provide maximum coverage. Appropriate sound coverage is important in larger spaces where participants are located further away from the front of the room. The volume remains constant for all in room participants.

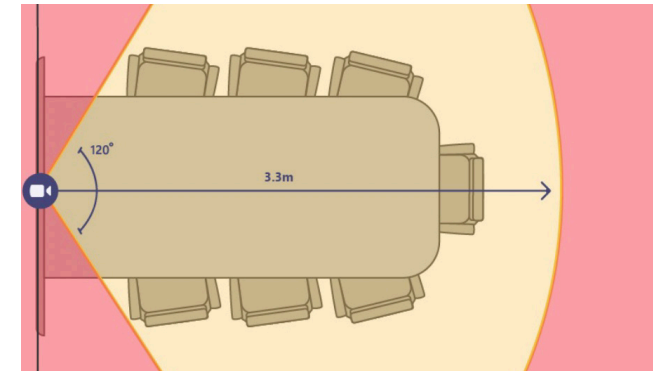


Wall mounted solutions provide the voice at the front of the room where remote participants are viewed. This location of the speakers make it sound like the audio is coming from the remote participants. The volume will decrease the further away the in-room participants are from the speaker.

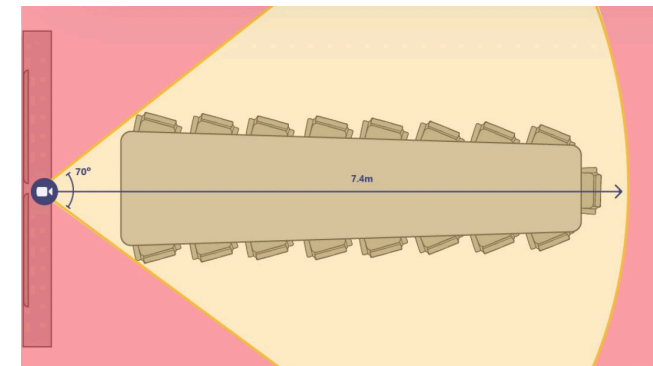
What is the right camera for the space?



An auto-tracking camera with a wide field of view so everyone in the room can be seen clearly, speakers can be followed and placed in frame.



Smaller spaces generally have fewer people in the room with seating closer to the camera. This scenario requires a wide field of view to capture those close to the camera in a single wide shot.



Rooms that are greater than 4m should be equipped with a camera that has optical zoom and a narrower field of view. This optimises the ability for the camera to pick up in-room participants at a distance. Functions such as speaker tracking or intelligent framing options allow for a richer remote experience.

Equip every employee and every space

Recommended and Example Room Set-Ups							
	Home Office	Private Booth	Huddle Space	Meeting Room	Boardroom	Open Space	Reception
Seats	1	≤ 2	≤ 4	≤ 8	≤ 20	≥ 10	≤ 3
Example Size	2m x 2m	2m x 2m	3m x 3m	6m x 6m	10m x 10m	Open office / Warehouse	Open Reception Area
Screen	Laptop / desktop screen	1 x 30 inch screen	1 x 40 inch screen	1 x 50 inch touchscreens	2 x 60 inch touchscreens	Optional	1 x 40 inch screen
Hardware	 Yealink WH62 Headset	 Yealink MP56 Deskphone	 Yealink Meeting Bar A20 with CTP18 Touch Panel	 Yealink MVC640 Room System  Yealink WPP20 Share	 Yealink MVC840 Room System  Yealink RoomPanel	 Yealink MP58 Deskphone with Wireless Bluetooth Handset	 Yealink MP58 Deskphone PLUS Yealink EXP50 Colour-Screen Expansion Module

Example and recommended meeting and conference room solutions

Building your perfect meeting room will be unique to you, designed to enhance collaboration and creativity within your team.

Our example meeting rooms include some of the most commonly used devices, equipment and solutions.

Home office



What is this space used for?

A private office space for work and private meetings. The individual should be able to provide a rich experience for remote participants during online meetings and calls.

What devices?

Appropriate audio/video coverage for a small space. A broad portfolio of personal devices may be suitable, such as desk phones, headphones, displays and peripherals that can be utilised in this space.

What else should you consider?

Limited installation requirements makes this easy to both install and deploy for a personal room system.

Risc Recommends

Yealink WH62 DECT

Noise-free quality audio that makes you feel like you're there.

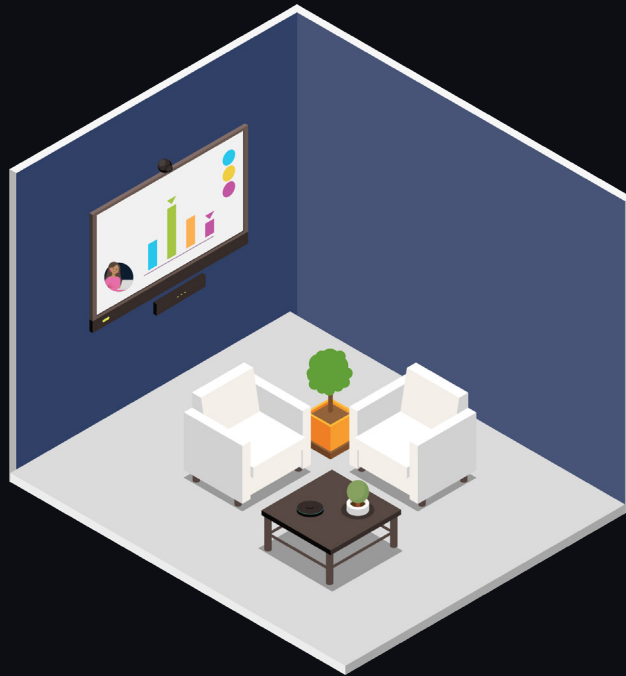


Getting it done when there's so much going on around you isn't always easy, but this headset is here to help. Calls are better with conversation-focused sound that leaves the background noise out while projecting your voice clearly and confidently. And work goes easier with vibrant audio that immerses you in your music to keep your day humming along.

Features

- HD voice with Yealink acoustic shield
- Connect to your devices and applications with ease
- Intelligent mute zone
- 330 degree adjustable microphone
- Lightweight design with adjustable headband
- Replaceable soft leather ear cushions

Private booth



What is this space used for?

A private space for work, private meetings or calls, separate to noisy or open spaces. The space should provide a rich experience for individuals to communicate, meet with privacy and remain focussed.

What devices?

Appropriate audio/video coverage for a private space. A broad portfolio of devices, primarily desk phones can be utilised in this space.

What else should you consider?

Limited installation requirements makes this easy to both install and deploy for a personal room system. The device can be given a unique DDI without the need to assign a user, making it ideal for use by multiple internal colleagues, or external visitors.

Risc Recommends

Yealink MP56 Deskphone

Professional and sophisticated audio technology, making every conversation clear.



The MP56 combines the professional hardware and software technology to deliver crystal clear voice communications. Thanks to Yealink Optima HD voice, Noise Proof Technology, and the hardware of full-duplex hands-free speakerphone with AEC and HAC handset, MP56 delivers excellent audio experience in an open workspace.

Features

- Android9 OS
- 7-inch multi-touch screen
- Optimal HD audio, Yealink Noise Proof Technology
- Teams Button and tailored user interface
- Built-in dual-band 2.4G/5GWiFi and Bluetooth 4.2
- Magnet handset
- USB type A port, supports USB headset

Huddle space / small sized meeting room



What is this space used for?

A semi-private space primarily for personal work, but can also support collaborative creation, either alone or with a small group.

What devices?

Appropriate audio coverage for a small space. A wide-angle camera for visibility of the in-room participants.

What else should you consider?

Limited installation requirements makes this easy to both install and deploy for a small meeting room or huddle space.

Risc Recommends

Yealink Meeting Bar A20 with CTP18 Touch Panel



Yealink MeetingBar A20 is an all-in-one video device which integrates every thing you need for seamless video collaboration in small and huddle rooms. With the 20MP, 133° FoV lens AI camera, 8 MEMS microphone arrays and speaker, the A20 MeetingBar starts up the powerful video and voice experience perfectly even in small spaces. With simple plug-and-play for a quick kick-off, the A20 fulfils a cost-effective solution with the best experience for your video meeting.

Features

- Smart Teams collaboration
- 133° FoV 20MP AI camera with 8x e-PTZ
- Auto framing and speaker tracking
- Ultra HD full-duplex voice
- Quick setup plug-and-play
- Content sharing

Medium sized meeting room



What is this space used for?

Separate from personal work areas, a mid-sized space is for group work, collaborative sessions, presentations and online meetings with external professionals.

What devices?

Appropriate audio coverage for a mid-sized space that covers the room from the touch screen to the end of the table. A wide-angle camera rated for the appropriate depth to ensure all participants remain visible.

What else should you consider?

Multiple installation options include, a mobile cart for easy relocation or mounting to the wall in a permanent fixed location.

Risc Recommends

Yealink MVC640 Room System

Plus optional WPP20 Share



Designed for medium meeting rooms, the Yealink MVC640 Microsoft Teams Room system is a bundle video solution that brings everything you need to interact, connect, and collaborate with internal and external users seamlessly and intelligently. Included in the bundle:

- MCore mini-PC
- UVC84 USB PTZ 4K Camera
- MSpeech USB Speakerphone
- MTouch II Touch Panel
- Optional: WPP20 Share

Features

- One cable technology
- 4K camera with 12x optical zoom
- Field of view (diagonal): 80°
- Auto Framing
- 3 Microphone array
- 20ft / 6 metre voice pick up range
- Voice recognition, voice transcription, and Cortana
- Multi-mounting options for the MCore mini-PC
- Optional WPP20 for one-click wireless content sharing

Boardroom



What is this space used for?

A large meeting room for group work, informational meetings, and collaborative creation. Connect with your offices in other locations and invite remote colleagues and distant customers to join meetings happening on site.

What devices?

Appropriate audio/video coverage for a large space including a wide-angle camera rated for the depth to maximise visibility of the participants, at least one large immersive touch screen and a centre of the room control allowing participants to engage with the meeting without leaving their seat.

What else should you consider?

Consider the multiple uses for your space, including presentation-focused meetings, collaborative sessions and online meetings.

Risc Recommends

Yealink MVC840 Room System

Plus optional Yealink Teams
RoomPanel



Designed for large meeting rooms, the Yealink MVC840 Microsoft Teams Room system is a bundle video solution that brings everything you need to interact, connect, and collaborate with internal and external users seamlessly and intelligently. Included in the bundle:

- MCore mini-PC
- UVC84 USB PTZ 4K Camera
- VMC34 Array Microphone
- Yealink Soundbar
- MTouch II Touch Panel

Features

- One cable technology
- 4K camera with 12x optical zoom
- Field of view (diagonal): 80°
- Auto Framing
- 3 Microphone array
- 20ft / 6 metre voice pick up range
- Voice recognition, voice transcription, and Cortana
- Multi-mounting options for the MCore mini-PC

Open space



What is this space used for?

A large or extra-large open space such as a warehouse, distribution centre or manufacturing space where colleagues can connect with offices and colleagues in other locations and join meetings happening off site.

What devices?

Devices may need to be docked within a static area but can be used whilst moving around when only calling functionality is required. Devices with Active Noise Cancelling will help keep audio clear in large, open and noisy spaces.

What else should you consider?

Consider the colleagues and activities within the space, including whether visual devices with cameras and large screens are required, or whether a flexible and mobile device will support communication.

Risc Recommends

Yealink MP58 with Wireless Bluetooth Handset

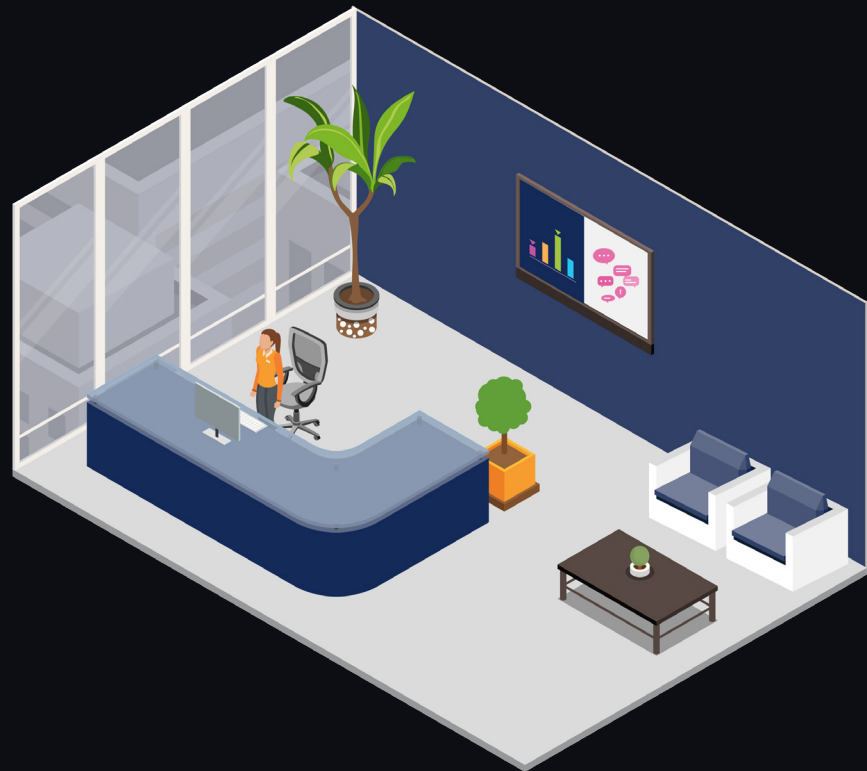
To help the users stay connected while working away from a desk, mobility and flexibility are essential, whilst high-quality audio is a must. By supporting the optional wireless Bluetooth handset, the MP58 will free your calling experience from sitting by the desk.



Features

- Wireless Bluetooth magnetic handset
- Android9 OS
- 7-inch multi-touch screen
- Optimal HD audio, Yealink Noise Proof Technology
- Microsoft Teams tailored user interface
- Dedicated Microsoft Teams button
- Supports Microsoft 365
- Built-in dual-band 2.4G/5G WiFi and Bluetooth 4.2
- 2 USB type A ports, supports USB headset
- Dual-port Gigabit Ethernet, PoE support

Reception



What is this space used for?

A reception area which may have a single or multiple users. The space may be at the entrance of an open office or enclosed within a dedicated reception area. The space can be busy at times with staff passing through or welcoming external visitors. The reception staff are the first point of contact for people on site and those calling in.

What devices?

A docked handset with advanced functionalities such as call transfer, speed dial and presence visibility will enable reception staff to operate efficiently and cohesively. Devices with Active Noise Cancelling will help keep audio clear in large, open and noisy spaces.

What else should you consider?

Docked devices with the ability to support USB headsets will offer true flexibility for staff.

Risc Recommends

Yealink MP58

with EXP50 Expansion Module



The MP58 is a smart business desk phone combining the professional hardware and software technology to deliver crystal clear voice communications. The MP58 can support an optional Bluetooth wireless handset which allows the user to leave the desk and continue talking, adding flexibility for executives and professionals.

MP58 Features

- Android9 OS
- 7-inch multi-touch screen
- Optimal HD audio, Yealink Noise Proof Technology
- Microsoft Teams button
- Adjustable display
- Dedicated Microsoft Teams button
- Supports O365
- Built-in dual-band 2.4G/5G WiFi and Bluetooth 4.2
- 2 USB type A ports, supports USB headset
- Dual-port Gigabit Ethernet, PoE support

Risc Recommends

Yealink EXP50 Expansion Module

The EXP50 Expansion module adds efficiency and productivity, bringing a fresh visual presence, intuitive user interface, and easy-to-use operating experience. The EXP50 is an ideal solution for receptionists, administrative assistants or employees of contact centres to monitor contacts and manage a large volume of calls with ease.

EXP50 Expansion Module Features

- Multifunctional line keys include BLF, speed dial, call forward, transfer, call park, call pickup
- 4.3" color display with backlight
- Show up to 20 contacts on each page - 20 physical keys with dual-color LED indicator
- See contact status at a glance with the presence LED
- 3 control keys with illuminated LED for fast page switch
- Supports up to 3 modules daisy-chain, adding 180 additional programmable keys
- Stand with 2 adjustable angles
- USB port (2.0 compliant) for data in and out



MS Teams rooms on Surface Hub

Next-gen collaboration



The next generation of Teams on Surface Hub has been redesigned with collaboration at its very heart, bringing your favourite features from the desktop and Microsoft Teams directly into the meeting space.

With a brand new meeting stage, robust meeting controls and a feature-rich experience including Together mode scenes, live reactions, chat bubbles, Whiteboard and PowerPoint Live, Teams Rooms on Surface Hub enriches your hybrid workplace collaboration and Teams experience.

Using Whiteboard, you can easily access your M365 files, leveraging a richer Whiteboard experience that empowers you to deliver inclusive presentations to everyone.

Teams Rooms on Surface Hub brings familiar meeting experiences from Teams desktop to provide an immersive and inclusive experience across endpoints. Meetings are joined from either the Surface Hub welcome screen or the Surface Hub agenda page and are automatically joined Edge-to-Edge, creating a meeting experience around your people.

Solutions for workers on the move

Equip them to meet, call and collaborate from anywhere



Risc IT Solutions supports and equips workers to collaborate and communicate flexibly from anywhere with TeamsLink. Bridge the gap between all colleagues with headsets and accessories for hybrid, remote and on-site colleagues and ensure they can be seen, heard and fully engaged with those in office meeting rooms.

Automotive

Construction

Defence

Financial Services

Field Services

Education

Energy and Utilities

Engineering

Healthcare

Human Resources

IT

Manufacturing

Marketing

Professional Services

Real Estate

Retail

Sales

Oil and Gas

Today's businesses will adopt tomorrow's technology

The ways in which we work, meet and collaborate have changed. Work is now fluid, dynamic and Cloud-powered. We utilise immersive and people centric spaces designed around bringing everyone together around the same virtual table. Microsoft Teams Rooms remove the barriers that exist between spaces and deliver powerful meeting experiences for everyone, bridging the gap between remote and in-person collaboration to unite people regardless of their location.



Contact us



Microsoft
Partner



Gold Small and Midmarket Cloud Solutions
Gold Cloud Productivity
Gold Enterprise Mobility Management
Gold Datacenter
Silver Cloud Platform

01492 862780

information@riscitsolutions.com