

Release notes

Redstor v19.1

Latest Versions:

Desktop & Laptop Edition: v18.10

Server Edition: v18.10

Enterprise Server Edition (ESE): v19.1

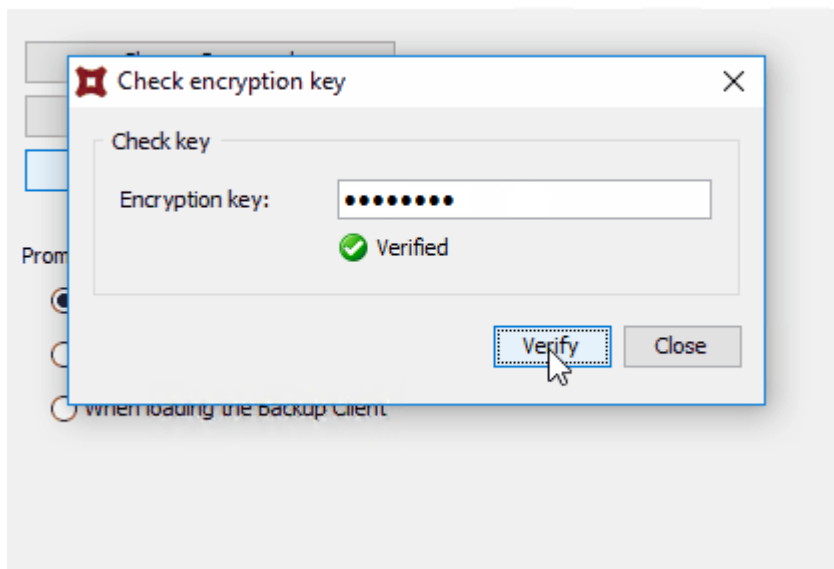
Enterprise Server Edition:

Encryption Key Check

Unsure what your encryption key is? Easily verify it with the Check encryption key option built into the ESE client.

To do this, go to **Tools > Options > Backup Account > Check encryption key**.

Security



System Tray Enhancement

The system tray menu options Backup Now and Cancel Backup will be disabled when the Backup Client is set to prompt for a password on loading the user interface.

Hide System Tray

Need to prevent certain users from seeing the ESE system tray? No problem - restrict their access via a registry key.

- Tray execution can be prohibited on a per-user basis by changing the following integer (DWORD) registry entry with a value of zero:

Computer\HKEY_CURRENT_USER\Software\Redstor\BackupClient\RestrictTrayAccess

Performance Improvements – numerous files in a folder

Less memory usage whilst scanning a folder which holds numerous individual items.

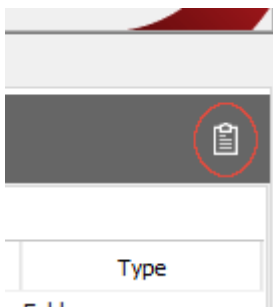
Faster response when cancelling a backup of this folder type.

New System Restore Report

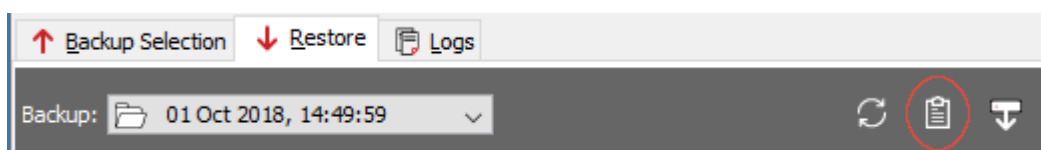
The new System Report functionality makes it possible to see the backup selection for any given date.



- To generate a report of what is currently selected for backup, click the report icon on the **Backup Selection** tab.



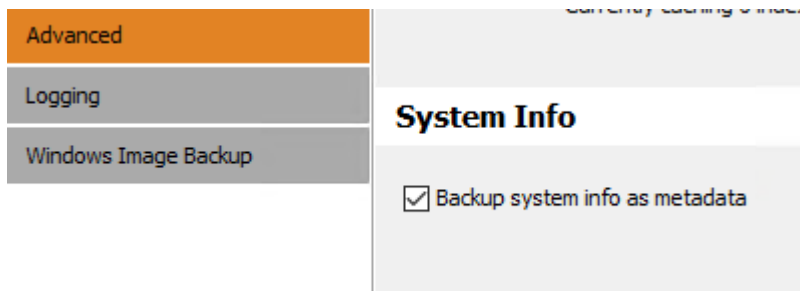
To generate a report of a specific date's backup selection, select a backup point (date) on the **Restore** tab and click the report icon.



Backup system info as metadata

The system information from the time of the backup (OS, installed software, installed updates and hot fixes) can now be included as part of the backup selection, which aids the process of Full System Recovery.

To do this, go to **Tools > Options > Advanced** and enable **Backup system info as metadata**.



To view the backed up information, run the System Report via the Restore.

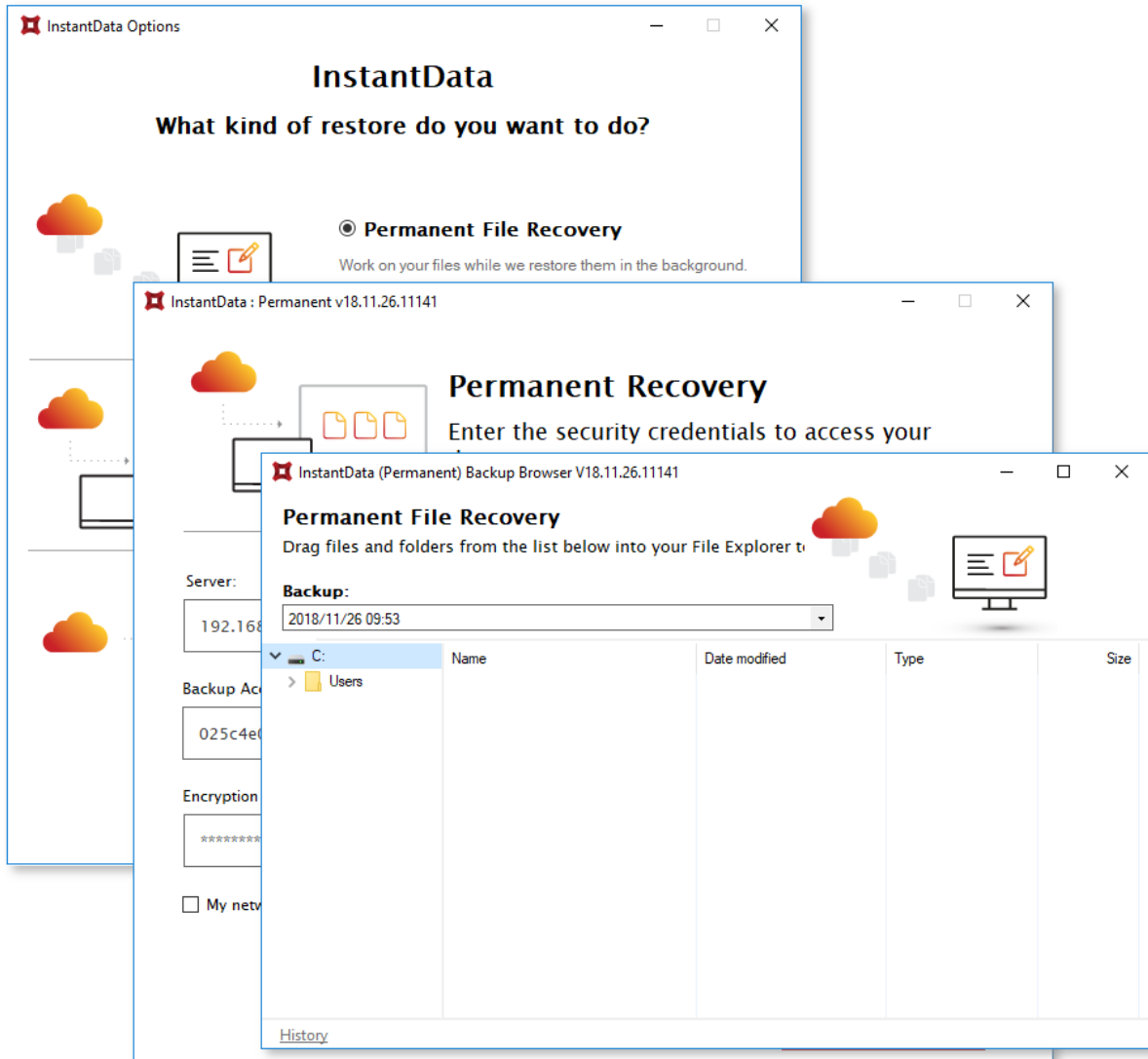
Support for dynamic hostnames when restoring SQL databases

This gives you the ability to restore a SQL database even when the hostname of the relevant machine has changed, for example in a disaster recovery scenario.

InstantData:

New Look and Feel

InstantData now has a new look and feel.



Full System Restore of extended partitions

Extended partitions will appear on the disk configuration page along with the primary partition.

Logical partitions will appear at the bottom of the list of volumes.

The screenshot shows the Windows Disk Management console. At the top, a table lists various volumes with their properties. Below this, four disks are shown with their partition layouts. Disk 1 is highlighted with a red box, and its extended partition (G:) is also highlighted with a red box. A red arrow points to the free space area on Disk 1. A legend at the bottom identifies the colors used for different partition types.

Volume	Layout	Type	File System	Status	Capacity	Free Spa...	% Free
(C:)	Simple	Basic	NTFS	Healthy (S...	350 MB	318 MB	91 %
(D:)	Simple	Basic	NTFS	Healthy (B...	79,66 GB	41,06 GB	52 %
(E:)	Simple	Basic	NTFS	Healthy (P...	50,70 GB	36,26 GB	72 %
(F:)	Simple	Basic	NTFS	Healthy (P...	5,00 GB	4,97 GB	99 %
(G:)	Simple	Basic	NTFS	Healthy (P...	19,87 GB	19,55 GB	98 %
(H:)	Simple	Basic	NTFS	Healthy (L...	1000 MB	814 MB	81 %
(I:)	Simple	Basic	NTFS	Healthy (L...	1000 MB	957 MB	96 %
(J:)	Simple	Basic	NTFS	Healthy (L...	1000 MB	882 MB	88 %
(K:)	Simple	Basic	NTFS	Healthy (L...	1000 MB	963 MB	96 %

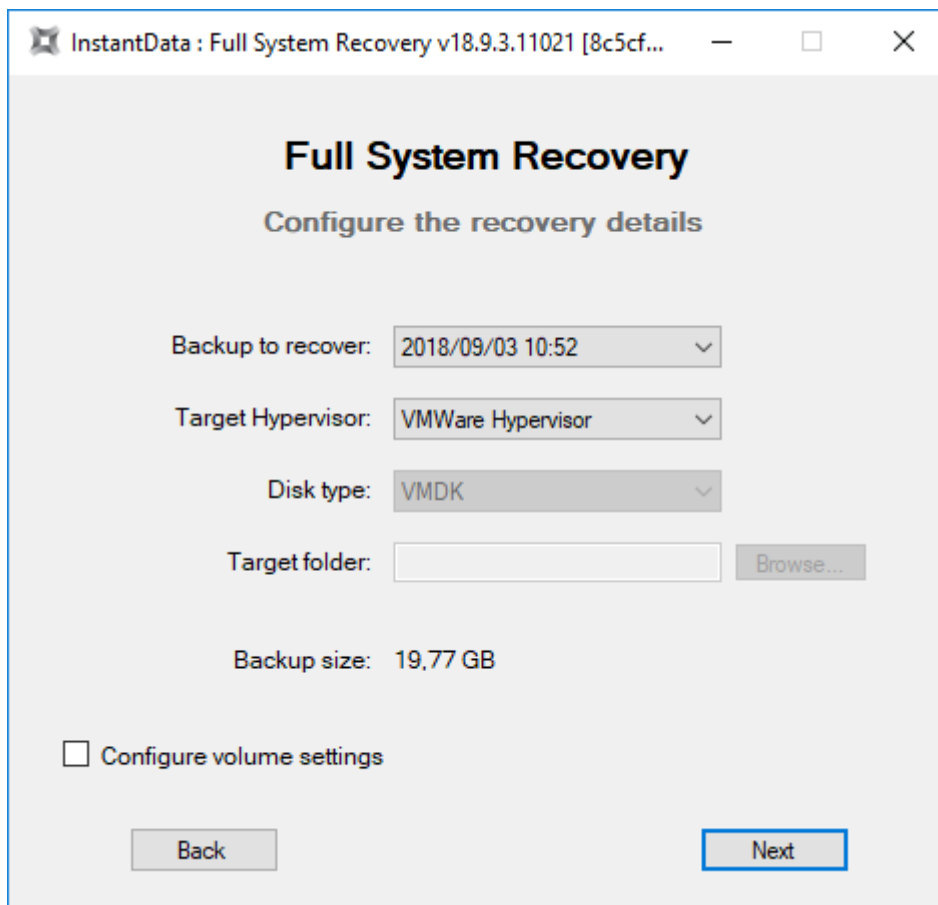
Disk	Partition	Type	File System	Status	Capacity	Free Space
Disk 0 (80,00 GB)	(C:)	Primary	NTFS	Healthy	79,66 GB	41,06 GB
	(350 MB)	Primary	NTFS	Healthy	350 MB	318 MB
Disk 1 (60,47 GB)	(D:)	Primary	NTFS	Healthy	50,70 GB	36,26 GB
	(G:)	Extended	NTFS	Healthy	19,87 GB	19,55 GB
	(H:)	Logical	NTFS	Healthy	1000 MB	814 MB
	(I:)	Logical	NTFS	Healthy	1000 MB	957 MB
	(J:)	Logical	NTFS	Healthy	1000 MB	882 MB
	(K:)	Logical	NTFS	Healthy	1000 MB	963 MB
	(4,88 GB)	Free space				4,88 GB
Disk 2 (19,88 GB)	(F:)	Primary	NTFS	Healthy	19,87 GB	19,55 GB
Disk 3 (5,00 GB)	(E:)	Primary	NTFS	Healthy	5,00 GB	4,97 GB

Color	Partition Type
Black	Unallocated
Blue	Primary partition
Green	Extended partition
Light Green	Free space
Dark Blue	Logical drive

Full System Restore directly into VMWare

To restore using VMware Hypervisor:

<https://support.redstor.com/hc/en-gb/articles/360007169453#direct>



InstantData : Full System Recovery v18.9.3.11021 [8c5cf...]

Full System Recovery

Configure the recovery details

Backup to recover: 2018/09/03 10:52

Target Hypervisor: VMWare Hypervisor

Disk type: VMDK

Target folder: Browse...

Backup size: 19,77 GB

Configure volume settings

Back Next

*Please note. Full System Recovery to a VMware hypervisor does not work with the vSphere ESXi free edition where a vCenter Server is not required:

<https://support.redstor.com/hc/en-gb/articles/360012781093-1183-Full-System-Recovery-does-not-work-with-VMware-vSphere>